

Lake Winnebago history

The largest fresh water lake within the state, Lake Winnebago, was carved from the same limestone formation that created Niagara Falls, 900 miles to the east. Beautiful Lake Winnebago merits its "big lake" reputation with 215 square miles of surface water. The lake spreads 28 miles from head to toe and 10.5 miles across. Lake Winnebago covers 137,000 acres, holds 696 billion gallons of water and is 21 feet at its deepest.



American Indians first used the waterways of Lake Winnebago as a means for traveling and transporting commercial goods



between the Great Lakes and the Mississippi River. Later, early French explorers and fur traders used the same route for trade, travel and transportation. The new settlers employed the rushing waters of the lake and its connecting flow of rivers. They began building grinding mills and sawmills using the waters as a harness to power the new industries. In 1850, dams were

built and canals were dug, transforming Lake Winnebago into a huge flowage and storage place for their manufacturing processes. The building of these dams caused an estimated 50,000 acres of low-lying land to flood, changing the contour surrounding the lake. Even today along the south and southeast shoreline, you can see the trunks of huge trees that once grew where water is now.

These waters abound with great numbers of fish, large flocks of bluebills and whistling swans that can be seen at migration times. The entire shoreline affords countless opportunities to study the many species of birds that glide and spiral across the fertile lake. You will be accompanied by swallows and martins who chirp and sweep the evening sky, and you may catch a glimpse of a great blue heron if you put your canoe in the water before sunrise.



You can fill your days with museums, tour sites and shopping that surround the lake, and bring excitement to your nights while visiting one of the many cultural events, restaurants or clubs. This is the adventure and discovery of beautiful Lake Winnebago.

Fond du Lac history & facts

Fond du Lac, at the far end of Lake Winnebago, was once a trading center for French voyageurs and Woodland Indians. Effigy mounds to the north and south of the city suggest the area's



importance to Native Americans 2,000 years before the arrival of the voyageurs. Colwert and Fanna Pier became Fond du Lac's

first permanent settlers in June of 1836, and by 1870 it was the second largest city in Wisconsin with a population of 12,764 and a booming lumber industry.

The arrival of the railroad gave the city's fortunes a boost, while the farmers outside the city were

milking cows in preparation for making cheese in the state's first cheese factory. While the railroad and the residents' work ethic gave rise to industries including Giddings and Lewis and Mercury Marine, the area's natural beauty spawned some of the finest wildlife artists in the nation, such as Owen Gromme, Tom Schultz, Don Kloetzke and Rockne Knuth.



Oshkosh history & facts

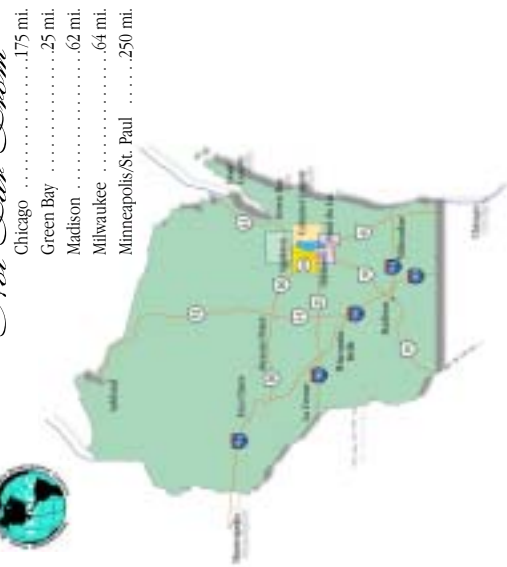
In 1836, Oshkosh's first settler, Webster Stanley, migrated from Ohio, built his home and established a trading post, a tavern and an inn. Three years later, the area became home to over 100 people. In 1847, Morris Firman built

the first sawmill in Oshkosh and within several years sawmills

Not Far From

Chicago175 mi.
Green Bay25 mi.
Madison62 mi.
Milwaukee64 mi.
Minneapolis/St. Paul250 mi.

Lake Winnebago Road Trip
2 North Main Street
Oshkosh, Wisconsin 54901
www.lakewinnebagoroadtrip.com



Lake Winnebago ROAD TRIP



88 Miles
of Pure Adventure
& Discovery!

lined the Fox River. The Great Chicago fire of 1871 created a boom in Oshkosh's lumber trade. The structures in the city's historic areas are a result of the capital and materials generated by the lumber industries. The 1859



arrival of rail transportation provided an opportunity to meet the demands of a rapidly growing construction market, and by



1870 Oshkosh had become the third largest city in the state. Today, Oshkosh has an abundance of sites and sounds for visitors to enjoy on the western shore of Lake

Winnebago. The waterways that once provided transportation and power are now a vital part of the recreational community. Oshkosh continues to grow and thrive with its greatest asset — the people who make this a great place to live, work and visit.

Northern Winnebago County history & facts

Menasha, one of the Fox Valley's "Twin Cities," features an historic downtown located at the canal that links Lake Winnebago, the Fox River and Little Lake Butte de Morts. Menasha's more than 15,000 residents enjoy a landscape river walk and an 87-slip marina.



Access to the marina is a benefit for area businesses, providing easily accessible waterways for the transportation of cargo. Many major corporations call Menasha home.

Neenah, the other half of the "Twin Cities," maintains its small-town charm even though it is at the center of one of

Wisconsin's major metro areas and is considered one of the 50 largest manufacturing centers in the nation. The Bergstrom-Mahler Museum and the Kimberly Point Lighthouse beckon visitors and residents alike.

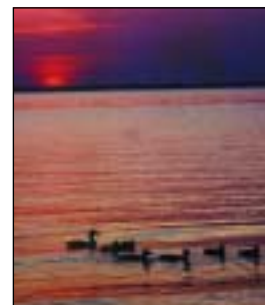


Calumet County history & facts

The 324 square miles that make up Calumet County are steeped with the history of the Winnebago, Chippewa, Potawatomi and Menominee Tribes that passed through the region.



This fertile region was eventually chosen as a home for two bands of Native Americans — the Brothertowns and Stockbridges. As settlers in surrounding areas were purchasing and staking claim to their lands, these bands found themselves involved in ongoing legislative and power struggles. In the end both found a peaceful way to co-exist in this incredibly beautiful place they wanted to call their own.



In 1836, Calumet County became official with settlers moving in, mills and stores being built, and land being cleared to build communities. Although the area remained largely rural, the Native Americans were soon finding themselves in the midst of the settlers' churches, schools and neighborhoods. By 1849, Chilton, Stockbridge and Brothertown saw quick growth with the added villages of New Holstein, Hayton and Gravesville.

The native heritage and stunning beauty of Calumet County makes it a place that you'll love to visit over and over!



Lake Winnebago ROAD TRIP

Oshkosh

www.oshkoshcvb.org
(877) 303-9200
2 N. Main St.
Oshkosh, Wisconsin 54901

Those who discovered the land that is now Oshkosh and established our community have left an imprint

of their heritage that today is woven in the beauty of our city, our buildings and our boulevards.

Oshkosh is much more than structures and streets. It is a refreshingly serene way of life. It is the natural blending of the lake and the river with the quiet of the land. It is crisp snowfalls and ice-dipped branches, bobbing sailboats and wildflower covered pastures. It is works of art mingled with colorful strokes of music,

theater and dance.

It is Tiffany glass, a vintage Harley and an extraordinary folk art clock. It is elegant gardens, majestic sculptures and speed machines that shake the lake and rattle the skies. Oshkosh is a city as proud of its name as was the Chief who bore it. We invite you to embrace Oshkosh . . . the welcoming places, the inviting spaces, the new experiences, the new adventures. Take lasting memories home from Oshkosh.



Northern Winnebago County

The northward flowing Fox River is the lifeblood of two of Wisconsin's most prosperous cities: Neenah and Menasha. Named after the Indian words Neenah meaning "clear water" and Menasha meaning "settlement on the island," these cities offer the perfect combination of small town atmosphere with an urban flare.



Explore these "twin cities" and you will find unparalleled shopping, dining, and entertainment opportunities, cleverly interspersed with parks, trails, and nature preserves. As you travel the streets and trails toward the waterfront, your surroundings transform into a nautical paradise, complete with lighthouses, marinas, wharfs, and dockside restaurants. From the window shopper to the seafaring sailor, Neenah and Menasha have something for everyone.

Northern Winnebago Hot Spots

1. Barlow Planetarium
2. Bergstrom-Mahler Museum
3. Cavanaugh's Carriages
4. Doty Cabin in Doty Park
5. Downtown Neenah Shops
6. Heckrodt Wetland Reserve
7. Jayem Gallery
8. Menasha Marina
9. Weiss Earth Science Center

In Neenah and Menasha, you can nearly envision the pathway of history opening up to the prosperity of today. Since the mid-1800's, the water power of the Fox River has brought industrial strength to the region. Today, Neenah and Menasha remain at the heart of the nation's paper industry and boast several Fortune 500 companies.

The historic waterfront mansions of yesterday's industry giants live on today as museums, glamorous homes, and sightseeing wonders. Century-old landmarks such as Neenah's Shattuck Park are being revitalized into contemporary recreational, cultural, and economic focal points.



Rediscover the bountiful treasures of Lake Winnebago's north shore...visit Neenah and Menasha!

Calumet County

www.travelcalumet.com
www.calumetcountytourism.com
(920) 849-1493 ext. 200
206 Court Street
Chilton, Wisconsin 53014

Calumet County Hot Spots

1. High Cliff State Park & Observation Tower
2. Calumet County Park
3. Ledgeview Nature Center
4. Brillion Nature Center
5. Stockbridge Harbor
6. Fishing Villages
7. Brothertown Indian Memorial
8. Main Street Art Works
9. Rowland's Micro-Brewery
10. Historic Timm House

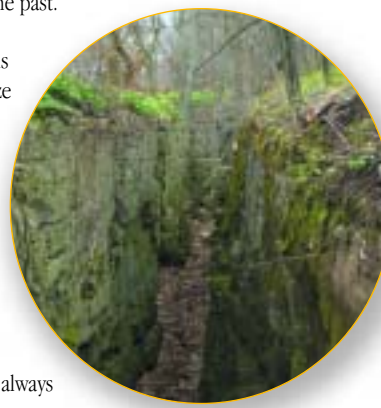


As you round the eastern corner at the top of Lake Winnebago, you will find yourself embarking on pleasures that only nature could create. Breathtaking cliff views and natural beauty make the retreat of Calumet County an experience you won't want to miss! As you travel into this quiet getaway, you will find yourself in the midst of creating unforgettable memories to cherish for a lifetime. You'll be surrounded with scenic vistas, wooded trails, beautiful parks and wildlife that will leave you counting the days until your return.



We are home to the spectacular High Cliff State Park, fascinating underground caves, mysterious effigy mounds, and miles of quiet Lake Winnebago shoreline. Our rich Native American heritage has been preserved with historical markers and museums throughout the county, giving you an opportunity to revisit the past.

Our quaint towns and villages will hypnotize you with just the right combination of shops to explore and restaurants to experience. You won't be able to resist the hometown charm that is a way of life here, offering a stress-free atmosphere to relax and unwind in a world that's always on the go.



Welcome to nature's retreat in Calumet County!

- ### Oshkosh Hot Spots
1. Little Oshkosh
 2. Menominee Park
 3. Paine Art Center and Gardens
 4. Oshkosh Public Museum
 5. EAA AirVenture Museum
 6. Military Veterans Museum
 7. Grand Opera House
 8. Prime Outlets
 9. Powercom Speed Zone
 10. Pioneer Princess
 11. Leach Amphitheater

Fond du Lac

www.fdl.com
(800) 937-9123
171 S. Pioneer Rd.
Fond du Lac, Wisconsin 54935



The southern tip of Lake Winnebago offers you the memorable pleasures of the friendly Fond du Lac community. Find yourself spending a delightful afternoon at Lakeside Park and the Lighthouse where you'll discover a magnificent view of the lake from its 40-foot observation deck and the 400-acre park that compliments her shores.

You will have an opportunity to master the streets of the city while taking the Historic Talking Houses Tour. Enjoy the sites as you hear the city's history come to life through the sound of your radio!

You will also want to visit Fond du Lac's treasured

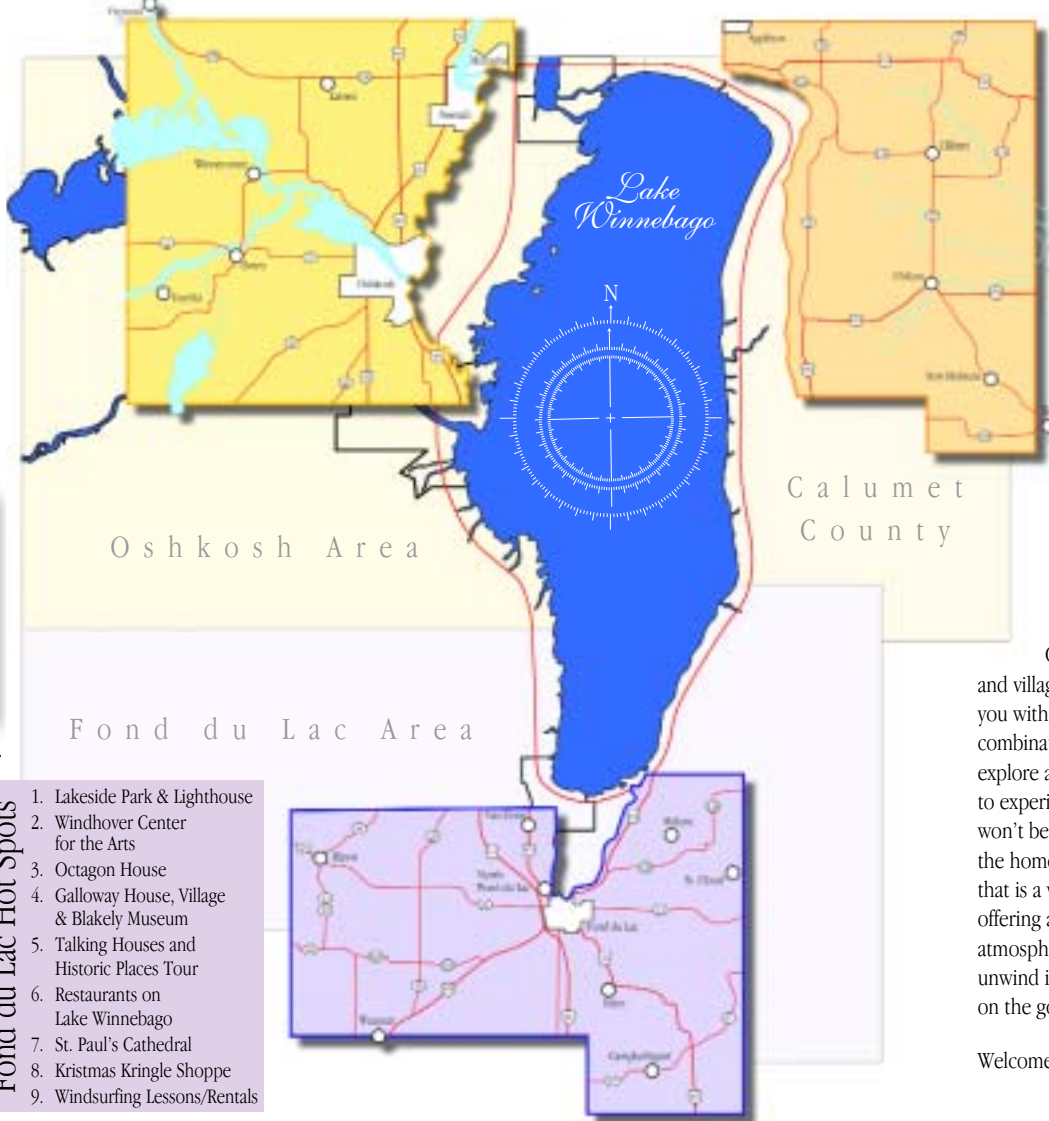
Galloway House and Village with Blakely Museum. Walk back in time at this historic site, which includes 30 buildings, filled with authentic artifacts from pre-history to present day.

Explore the sights and sounds of the Windhover Center for the Arts. You won't want to miss the impressive Gothic stone of St. Paul's Cathedral with murals, marble, and life-size wood carvings. Year 'round holiday delights await you at the Kristmas Kringle Shoppe.

Fond du Lac's rich history, hometown friendliness and beautiful scenery offers an experience that you will not want to miss on your road trip...you'll grow fond of us!



Northern Winnebago County



Fond du Lac Hot Spots

1. Lakeside Park & Lighthouse
2. Windhover Center for the Arts
3. Octagon House
4. Galloway House, Village & Blakely Museum
5. Talking Houses and Historic Places Tour
6. Restaurants on Lake Winnebago
7. St. Paul's Cathedral
8. Kristmas Kringle Shoppe
9. Windsurfing Lessons/Rentals

Lake Winnebago ROAD TRIP Driving Directions

Take a drive around Wisconsin's largest inland lake and you'll discover 88 miles of contrasting shoreline. If you want to drive around the lake, plan on at least half a day.

A good driving plan for photographers is to start in the morning in Fond du Lac at Lakeside Park and follow Highway 151 north (on the east side of the lake).

One of your first stops should be at COLUMBIA PARK about 10 miles out of Fond du Lac off Highway 151 on County W at Pipe. This park has boat launches, a playground, a pavilion and an 80, observation tower. As you drive north along Highway 151 you will see many signs to Lake Winnebago beaches, but save your time until CALUMET COUNTY PARK (about 30 miles northeast of Fond du Lac) and HIGH CLIFF STATE PARK (about 34 miles northeast of Fond du Lac). You will find the others are just semi private drives with rather limited or no public access.

Head north a few miles to CALUMETVILLE. Turn left on Weber Road toward Artesia Beach and about a mile later, turn right on Lake Shore Road. It's a beautiful, lake country drive. If you do not turn on Weber Road, Hwy 151 will branch off to the east. TAKE HIGHWAY 55 to stay along the lake.

About nine miles north of Calumetville is the town of STOCKBRIDGE. On COUNTY HIGHWAY EE turn left to Calumet County Park (watch for signs). This park is a hidden treasure with picnic areas, grills, campsites, nature study areas, a concession stand, and many other relaxing things to do. Take Highway EE back east to Highway 55 north (left) a few miles and follow the signs to HIGH CLIFF STATE PARK. This park offers camping, a beach, hiking trails and a marina.

When you leave High Cliff Park, catch HIGHWAY 114 and 55 north (beginning to go to the west side of the lake). Stay on HIGHWAY 114 through Menasha to Neenah. At the intersection of Highway 114 and COMMERCIAL STREET, travel south on Commercial Street which becomes HIGHWAY A. Travel south on Highway A to Oshkosh. If you want to stay along the lake, turn east onto MURDOCK STREET and stay on Murdock to MENOMINEE DRIVE travel south to WASHINGTON AVENUE, turn west to MAIN STREET then travel south on Main Street which turns into HIGHWAY 45.

Along Highway 45, between Oshkosh and Fond du Lac, there is a wayside if you need to stop. Highway 45 will bring you back to Fond du Lac along the west side of the lake.